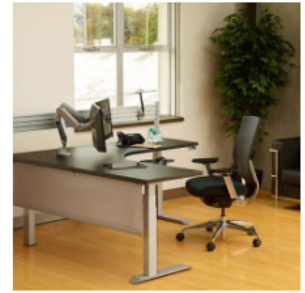




University of Minnesota Contract Vendor #0000003533

Workrite Electric Height Adjustable Table Bases – Sierra HX Nov 2018

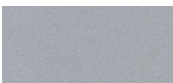
The Sierra HX Electric Height Adjustable Base mounts underneath a worktop. A Programmable Switch adjusts the worktop from 22.5" – 48.7" smoothly and quietly at a rate of 1.6" per second, with a lifting capacity of 225 lbs. for 2 leg and 300 lbs. for 3 leg models. LIFETIME WARRANTY on Parts.



Charcoal



Silver



*Charcoal 2 leg bases stocked by IOS

*Silver and 3 leg bases will require 3 week lead

Description: (Pricing per SPA 23370)	Model #	Select Color	List	UM Price	Quantity	Total cost
Sierra HX Height Adj Base, 30-48", 24" Feet, Programmable Switch, Charcoal or Silver	SEHX30-48-F24-PS-?	Base & Feet Color: Charcoal/ Silver	\$1,236	\$605.64		
Sierra HX Height Adj Base, 30-48", 30" Feet, Programmable Switch, Charcoal or Silver	SEHX30-48-F30-PS-?	Base & Feet Color: Charcoal/ Silver	\$1,246	\$610.54		
Sierra HX Height Adj Base, 54-72", 24" Feet, Programmable Switch, Charcoal or Silver	SEHX54-72-F24-PS-?	Base & Feet Color: Charcoal/ Silver	\$1,256	\$615.44		
Sierra HX Height Adj Base, 54-72", 30" Feet, Programmable Switch, Charcoal or Silver	SEHX54-72-F24-PS-?	Base & Feet Color: Charcoal/ Silver	\$1,266	\$620.34		
3 Leg Base 54-72" x 42-72", 24" Feet, Programmable Switch	SEHX5472-4272EOC-F24-PS-?	Base & Feet Color: Charcoal/ Silver	\$1,848	\$905.52		
3 Leg Base 78-90" x 42-72", 24" Feet, Programmable Switch	SEHX7890-4272OC-F24-PS-?	Base & Feet Color: Charcoal/ Silver	\$1,888	\$925.12		
WORK TOPS	3MM edge	Tier 1/2/3 Colors	List	Tier 1	Tier 2	Tier 3
Worktop 23" D x 46" W	T4623-B3-?	Top & Edge Color	\$220	\$107.80	\$117.60	\$144.55
Worktop 23" D x 58" W	T5823-B3-?	Top & Edge Color	\$290	\$142.10	\$159.25	\$198.45
Worktop 23" D x 70" W	T7023-B3-?	Top & Edge Color	\$360	\$176.40	\$196	\$245
Worktop 29" D x 46" W	T4629-B3-?	Top & Edge Color	\$250	\$122.50	\$134.75	\$166.60
Worktop 29" D x 58" W	T5829-B3-?	Top & Edge Color	\$320	\$156.80	\$176.40	\$220.50
Worktop 29" D x 70" W	T7029-B3-?	Top & Edge Color	\$425	\$208.25	\$230.30	286.65
Please Email for Corner Tops	TBD	Top & Edge Color	TBD			
Freight per order				\$15.00		15.00
Installation - \$95.00 of top and base (any add on furniture labor or moving is an additional cost, call for quote) *Outstate MN may have additional charges or only ships direct				95.00		
Total Order Cost ** Prices subject to change. Furniture is non-returnable. **						

To place your order - Please complete the information below, Sign, and email to Innovative:

Payment Method: UM Visa/Mastercard UM Purchase Order

Credit Card Payment Contact Information: Name _____ Phone: _____

Ship to: University of MN Dept.: _____

Building / Room # _____

Street: _____ City/ Zip _____

Phone: _____ Contact name: _____

Signature _____

Email to: Innovative Office Solutions InnovativefurnitureCS@innovativeos.com or Fax: 952-894-7153

Bill To: Dept.: _____

Building- Campus Del Code: _____

Street _____ City/ Zip _____

Phone: _____ Contact: _____

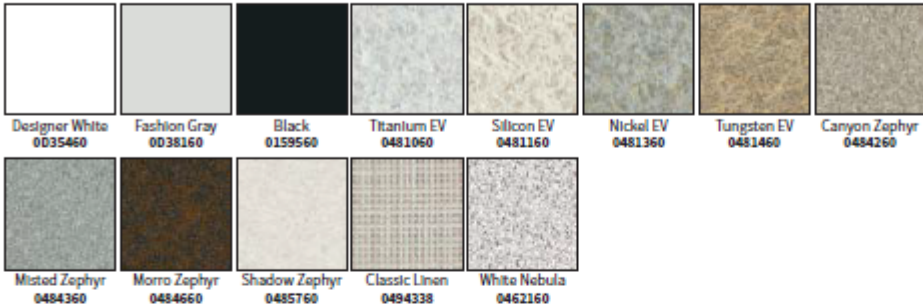
Date _____

HOW TO CONFIGURE YOUR WORKSURFACE

Select a worksurface laminate & edgeband

Workrite's standard laminated worksurface program features 25 popular Wilsonart® laminates with coordinating 3 mm edgeband options. For larger, more accurate swatches of available laminates, and suggested laminate to edgeband pairings, please refer to the Materials & Finishes tab of the Workrite binder.

Laminate Price Tier 1



Laminate Price Tier 2



Laminate Price Tier 3



Note: Due to printing limitations, these colors are not guaranteed to be accurately reproduced. For best results order actual Laminate Material Samples by calling (800)959-9675.

Edgebands



A guide to the laminate model #

Laminate color Edgeband color

0705460-152 This example is for a top in Wild Cherry with Rainier Cherry 3 mm edgeband.